

## CMSC Combination Clean & Soiled Utility Cabinet

**SPECIFICATION:**

**CMSC Model** Combination Clean and Soiled Utility Cabinet is made of 18GA Stainless Steel with (2) two doors. The cabinet is 46 1/2" wide x 24" deep x 84" high with a full height compartment separating the 23 1/2" long x 19" wide soiled sink from a 18 1/2" long x 19" wide filler/soak sink, both 5" deep with a 4" waste outlet. Utility spray hose with brush and mop holders are provided with the unit. The upper section of the cabinet has (1) one fixed shelf notched for mop handles. The cabinet base is fully enclosed and mounted on adjustable legs for leveling. The fill/soak side is supplied with a pot-filler faucet.

Hinged stainless steel doors fully enclose each of the soiled and clean sides, providing a sanitary separation within a compact space. Door catches provided, keep doors closed when not in use.



**PRODUCT GUIDE:**

The Combination Clean and Soiled Utility Cabinet is designed for use where space is limited and helps follow acceptable sanitary practices in any size facility. Mop buckets for kitchen and customer areas can be easily emptied, cleaned and refilled as needed in the soiled side. Cross bars provided are used to convert the unit to cleaning cans and individual pots.

The fill/wash side is used to fill stock pots and clean vegetables. Soiled side door is to be closed and latched to avoid cross contamination. Keep all doors closed and latched when not in use.

The shelf provides storage space for cleaning supplies. Optional removable sink covers provide additional storage when the sinks are not being used.

The design features and attractive finish of the IMC/Teddy Utility Cabinet allows placing this unit in cooking, prepping and customer areas. Compact facilities are particularly suited for use of this unit, as are most other establishments.

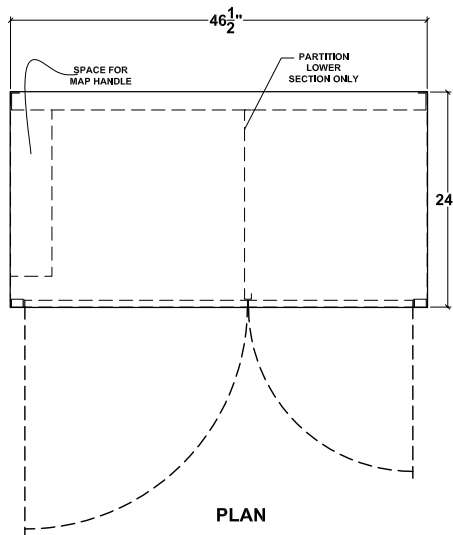
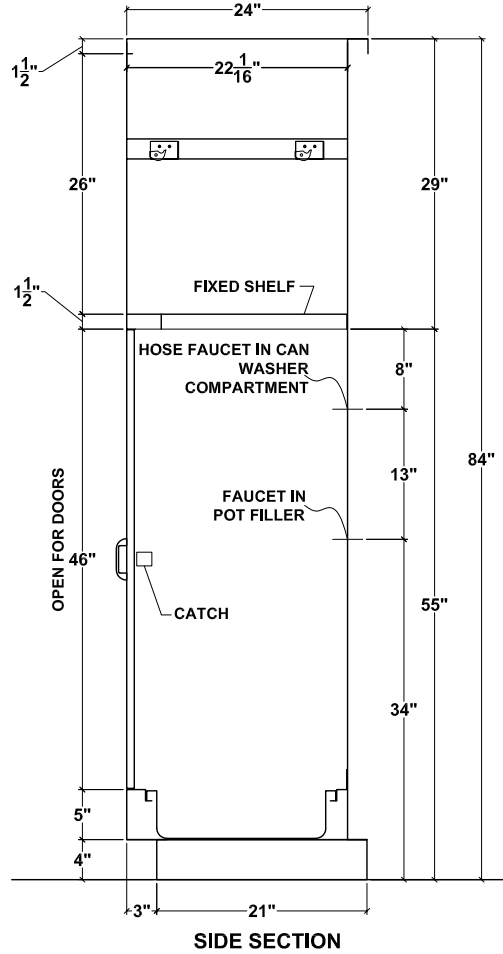
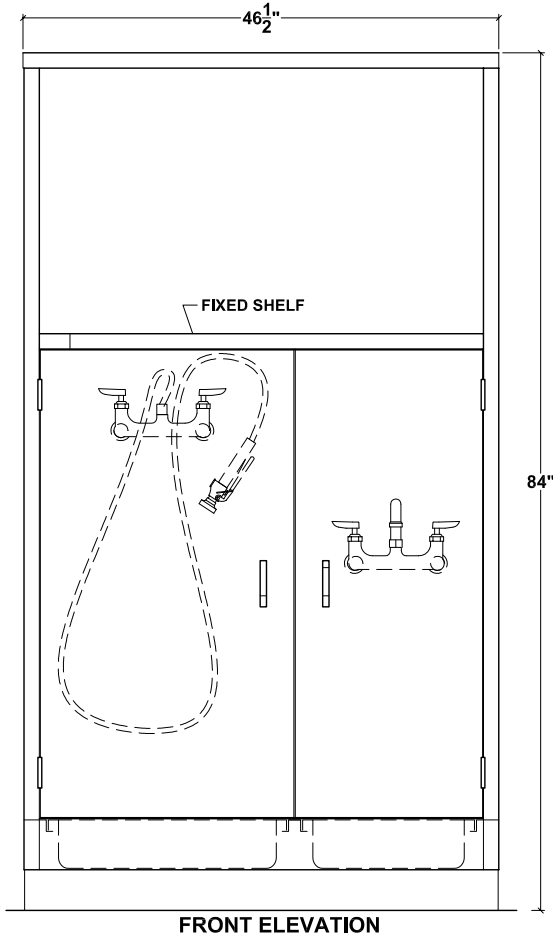
**OPTIONS:**

- Sloped Top
- Doors on Top
- Keyed Door Locks
- Storage Cabinet with Shelves on Right Side in place of Sink
- S/S Flat Cover over Sink (for use as temporary storage when sink is not in use)
- Intermediate Shelf in Top Storage Area



Specifications subject to change without notice.

# CMSC Combination Clean & Soiled Utility Cabinet



Specifications subject to change without notice.



P.O. Box 206  
Copiague, NY 11726-0206

800-221-5644/631-789-8881  
Fax: 631-789-3633

[www.imcteddy.com](http://www.imcteddy.com)

CMSC-20 1012