



SPACE WALL SHELVING SYSTEM – #104

Item # _____ Job # _____

Our Space Wall Shelving System combines the best of our wall grid and wall mounted adjustable shelving system. Our system allows you to maximize workspace, by using open wall space for convenient storage. This frees up valuable floor space for better use. Its quick and easy assembly allows shelves, baskets, hooks and other accessories to be moved, without the use of tools. The modular design and flexibility can be customized to meet your exact requirement.

WIRE GRID PANELS

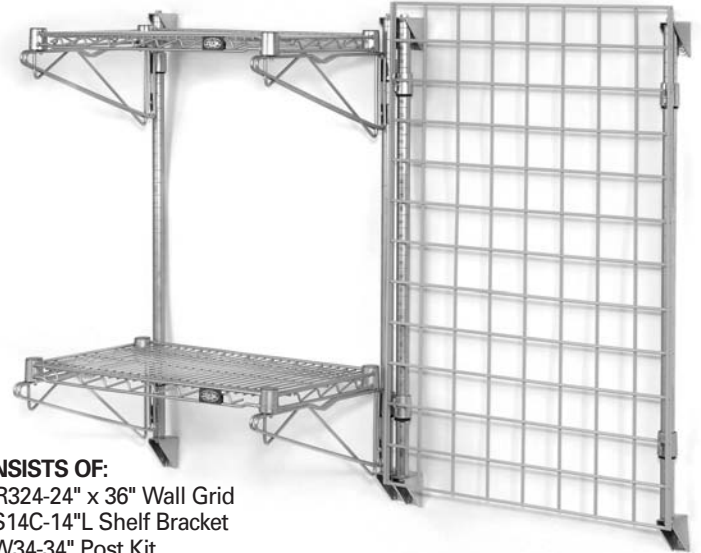


All Grids are 3" x 3" openings 1/4" steel wire. Grey epoxy finish.

Size"	Model No.	Size"	Model No.
18 x 36	DR318	36 x 48	DR436
18 x 48	DR418	36 x 60	DR536
24 x 36	DR324	36 x 72	DR636
24 x 48	DR424	48 x 48	DR448
24 x 60	DR524	48 x 60	DR548
24 x 72	DR624	48 x 72	DR648



SHELF COLLAR HOOK (Set of 4)
Model SSB1C



- CONSISTS OF:**
 1-DR324-24" x 36" Wall Grid
 2-PS14C-14"L Shelf Bracket
 2-PW34-34" Post Kit
 2-S1424C-14" x 24" Chrome Shelves
 1-SSB1C-Shelf Collar Hook Set

ADJUSTABLE SHELF BRACKETS



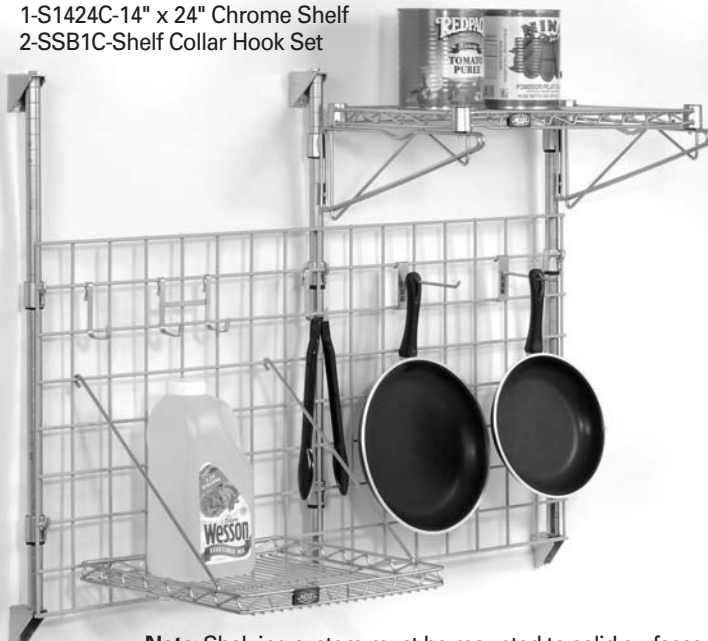
POST KIT	
Size"	Model No.
14	PW14
34	PW34
54	PW54
63	PW63

DOUBLE SHELF BRACKETS (1 per carton)	
Size"	Model No.
14	DPS14C
18	DPS18C
24	DPS24C

SINGLE SHELF BRACKETS (2 per carton)	
Size"	Model No.
14	PS14C
18	PS18C
24	PS24C

NOTE: USES STANDARD SHELVING. ORDER SHELVES SEPARATELY. SEE NEXEL CATALOG.

- CONSISTS OF:**
 1-DR424-24" x 48" Wall Grid
 1-PS14C-14"L Shelf Bracket
 2-PW34-34" Post Kit
 1-S1424C-14" x 24" Chrome Shelf
 2-SSB1C-Shelf Collar Hook Set



Note: Shelving system must be mounted to solid surfaces or studs in the wall. User needs to determine installation materials and methods suitable to support the system.



NEXEL INDUSTRIES INC.

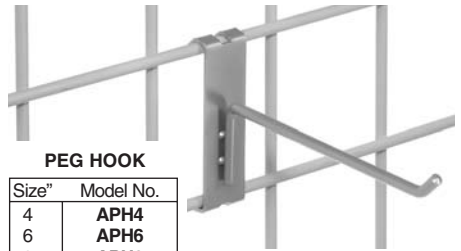
11 Harbor Park Drive
 Port Washington, NY 11050 U.S.A
 1-800-245-6682

NY: 1-516-484-5225 | FAX: 1-516-625-0084
 E-mail: nexelinfo@nexelwire.com
 www.nexelwire.com

SPACE WALL SHELVING SYSTEM – #104



Item # _____ Job # _____



PEG HOOK

Size"	Model No.
4	APH4
6	APH6
8	APH8
10	APH10
12	APH12

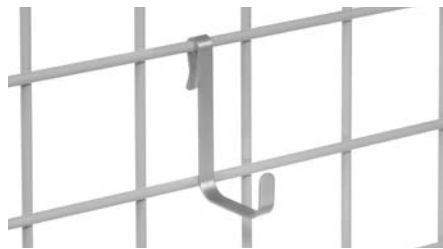
ACCESSORIES

ALL ACCESSORIES ARE CHROME FINISHED UNLESS SHOWN DIFFERENT



HOOK ARM - 16" L.

Model No.	AH5
-----------	-----



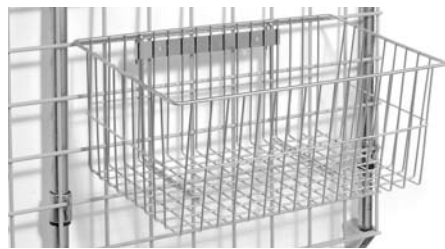
SINGLE HOOK

Model No.	AWSH
-----------	------



DOUBLE HOOK

Model No.	AWDH
-----------	------



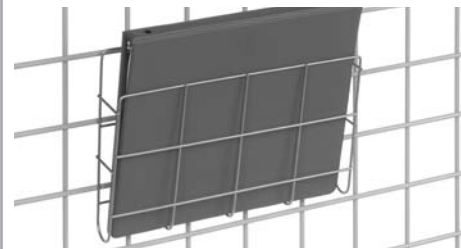
BASKET - 17³/₈" x 7¹/₂" x 10"

Model No.	ASW177
-----------	--------



HOOK RAIL BAR - 24" L with 7-5" L hooks.

Model No.	ARB7
-----------	------



DOCUMENT HOLDER - 12³/₈" x 2¹/₂" x 10³/₅"

Model No.	AH
-----------	----



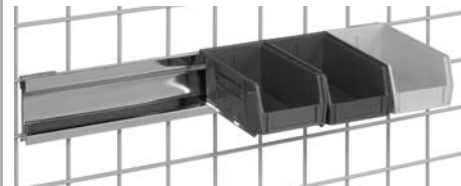
GRID SHELF - 16³/₄" x 16³/₄"

Model No.	AGS16C
-----------	--------



SHELF BRACKET - Holds 12" shelf.

Model No.	ASB12
-----------	-------



BIN RAIL - 31/2"

Size"	Model No.
23	AWBR23
35	AWBR35
47	AWBR47



WOOD SHELF WHITE MELAMINE LAMINATED

Size"	Model No.
12 x 36	AWS1236
12 x 48	AWS1248



BIN - Includes 4 Hooks to Mount on Grid

Size"	Model No.
W x D x H	Model No.
36 x 14 x 9	WB3149
48 x 14 x 9	WB4149

DIVIDERS - 14"D x 9"H.

Fits both Bins

Model No.	WD149
-----------	-------



WIRE SHELF-GRAY EPOXY

Size"	Model No.
12 x 36	DR312
12 x 48	DR412