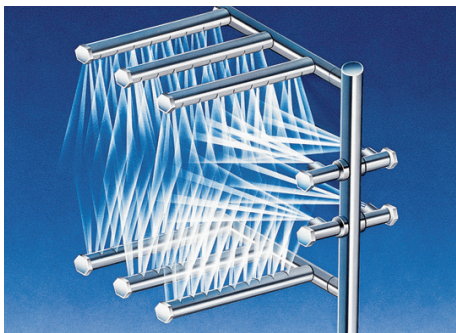


ADMIRAL 44-4 with optional VRS (Ventless Reclamation System) Single Tank Conveyor Dishwasher

- Automatic conveyor, rack type, single tank dishwasher with recirculating wash and fresh water final rinse.
- 0.63 gallons per rack at 20 PSI
- Capacity is 233 (20" x 20") racks per hour or 5,825 dishes per hour
- VRS heat recovery system
- CrossFire® Wash System provides superior cleaning
- Wide telescoping insulated doors allow for efficient daily cleaning
- Color-coded curtains for error-proof replacement
- No hood required (Refer to your local building code)



Telescoping Doors—no issues with low ceilings. The doors also provide wide access to the interior of the machine for quick and efficient daily maintenance.



The patent-pending **CrossFire® Wash System** power sprays water horizontally, as well as, from above and below, cleaning and sanitizing the dirtiest of ware.

STANDARD FEATURES

- CrossFire® Wash System
- Telescoping insulated doors
- Color-coded curtains
- Tank heat: heat recovery using a refrigerant compressor
 - Ozone friendly R134A refrigerant
 - High efficiency scroll compressor
 - High and low pressure switches
 - Easy access to gauge ports
- Manifold clean-out brush
- S/S 304 stainless steel construction
- Automatic tank fill
- Low water protection system
- Single point electrical connection: motor, controls and compressor (Optional booster requires a separate connection)
- Detergent connection provision
- Top mounted NEMA 12 control panel
- Door safety switches
- Standard frame drip proof motors
- Energy saver mode
- Override switch for de-liming
- SureFire™ Start-Up & Check-Out Service
- End caps/pipe plugs secured to prevent loss
- Timing belt conveyor drive

OPTIONS

- Built-in or stand alone electric booster heater
- Pressure reduction valve and line strainer
- Steam booster
- Security package
- Totally enclosed motors
- Rack limit switch
- Power Loader
- Power Unloader
- Door activated drain closer
- Plastic 20" x 20" racks (plate or silver)

Admiral 44-4 VRS



AUTOQUOTES

Capacity Per Hour	233 racks 5825 dishes 225-500 meals
Tank Capacity	21 gals. (wash)
Motor Size	2 hp (wash) 1/15 hp (conveyor) 1/2 hp (recirculation pump) 10 hp (compressor)
Electric Usage	15 kW b.i. booster 40° rise 27 kW b.i. booster 70° rise 15 kW rem. booster 40° rise 27 kW rem. booster 70° rise
Steam Consumption at 20 psi min.	52 lbs./hour booster 40° rise 91 lbs./hour booster 70° rise
Final Rinse Peak Flow at 20 psi min.	2.5 gallons/minute
Final Rinse Consumption at 20 psi min.	147 gallons/hour 0.63 gallons/rack
Peak Rate Drain Flow	9 gallons/minute
Shipping Weight	750 lbs.

Electrical	VRS	with Steam Booster	with 40° Rise Electric Booster*	with 70° Rise Electric Booster*
208/3/60	46.20	46.20	87.80	121.10
240/3/60	40.51	40.51	76.61	105.51
480/3/60	20.47	20.47	38.47	52.97

*Booster requires separate electrical connection

SPECIFICATIONS

VRS OPERATION- The VRS (Ventless Reclamation System) works by removing the heat and steam from the warewasher's exhaust vents and returning room temperature air to the surrounding space. The reclaimed heat is recycled to the warewasher's wash tank. The steam and water vapor is returned to the wash tank for reuse.

CONSTRUCTION- Hood and tank constructed of 16 gauge type 304 S/S. Hood unit of all welded seamless construction. S/S frame, legs and feet. All internal castings are non-corrosive lead free nickel alloy, bronze or S/S.

DOORS- Zero-Infringement Doors are extra large die formed, type 304 S/S, double-walled, insulated, front inspection doors. The vertically opening doors with spring assist, glide in full length tracks on either side. Automatic safety catch at full open locations.

SPECIFICATIONS (continued)

CONVEYORS- One S/S roller chain conveyor, with rack driving lugs every sixth link, running along the front of the machine. Eight free spinning rollers placed along the back wall of the machine. Conveyor accommodates all standard 20" racks. Conveyor drive system includes direct drive gear motor with frictionless, trouble-free clutch system, spring-loaded and automatically re-engaging. Racks conveyed automatically through washing and rinsing systems, powered by an independent 1/15 hp drive motor.

PUMP- Centrifugal type "packless" pump with a brass petcock drain. Construction includes ceramic seal and a balanced cast impeller on a precision ground stainless steel shaft, extension or sleeve. All working parts mounted as an assembly and removable as a unit without disturbing pump housing. 2 hp motor, standard horizontal C-face frame, drip proof, internally cooled with ball-bearing construction.

COMPRESSOR- A high-efficiency compressor utilizing R-134 refrigerant. The warewasher's water tank is heated by returning the heat that escapes from the warewasher combined with the heat of compression.

CONTROLS- Top mounted NEMA 12 control enclosure, housing motor overload protection, contactors, transformers and all other dishwasher controls. All controls safe low voltage 24 VAC.

ENERGY SAVER- Rack actuated lever automatically operates the final rinse solenoid only when a rack passes, saving water and energy. The lever also activates an adjustable timer control. If no ware passes during the set time, the machine shuts down.

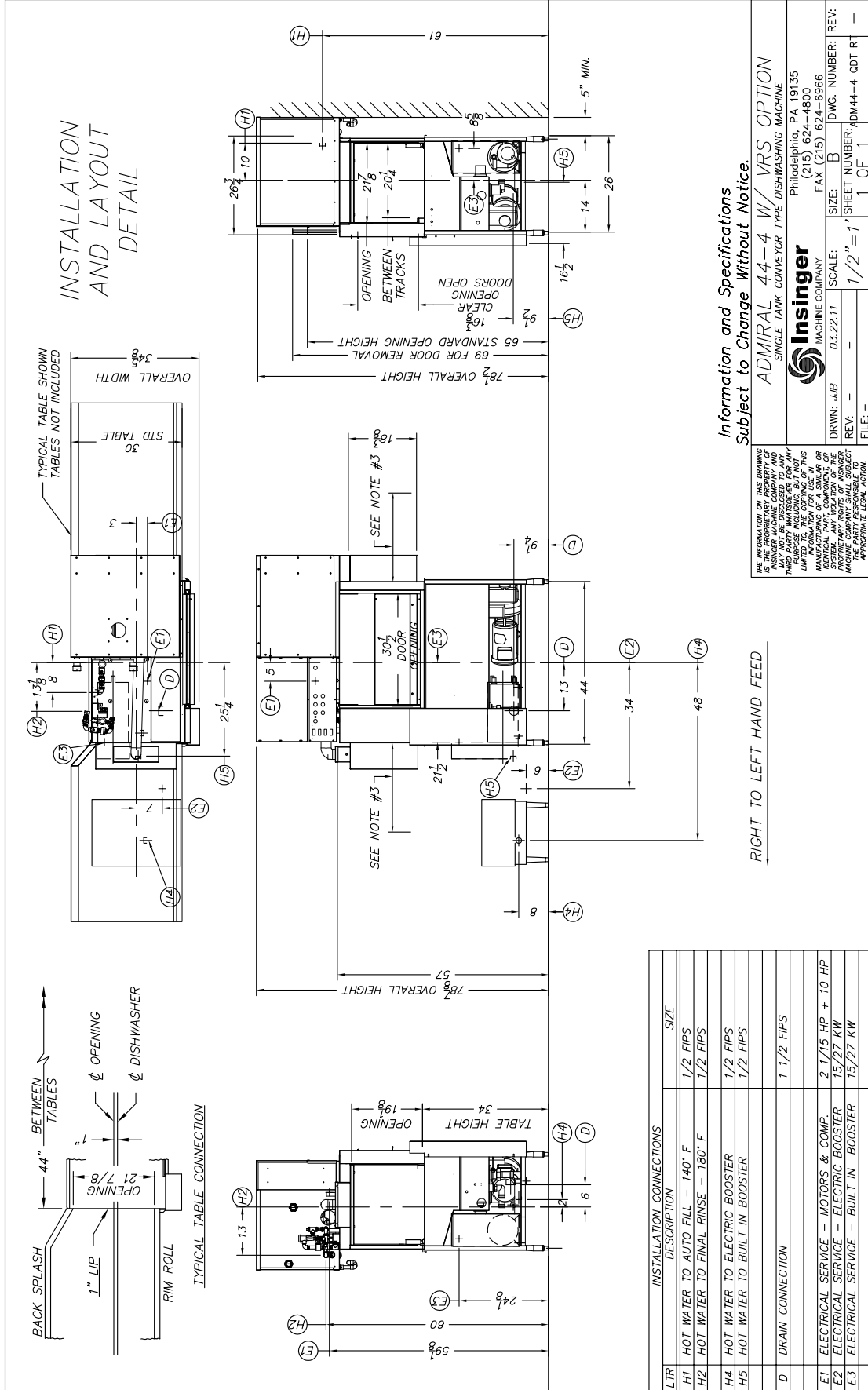
SPRAY SYSTEM- Spray arms made of type 304 stainless steel pipe. Spray assemblies removable without the use of tools.

WASH- Upper and lower manifolds with the patented CrossFire® Wash System. One manifold above with 3 power wash arms, each with 5 high pressure cleaning slots and one manifold below with 4 power wash arms, each with 7 high pressure cleaning slots. The slots are precision milled for water control producing a fan spray. Wash arms are fillet welded to the S/S manifold. The CrossFire® Wash System provides 2 horizontally spraying high pressure nozzles.

FINAL RINSE- Three nozzles above and four nozzles below threaded into S/S schedule 40 pipes. Nozzle assemblies produce a fan spray reducing water consumption, maximizing heat retention.

DRAIN- Drain valve externally controlled. Overflow assembly with skimmer cap is removable without the use of tools for drain line inspection. Heater is protected by low water level control.

Note: Due to product improvement we reserve the right to change information and specifications without notice.



Contact Insinger Sales at 800-344-4802 for an Installation Drawing Specific to Your Application
This drawing is available on the Insinger Web site at www.insingermachine.com

Admiral 44-4 VRS

