

Grind'n Brew™ Series

Dual Bean Grinderbrewers



Model 20H
(Airpot sold separately)



Model 21H
(Decanter sold separately)



Bean Usage Counter

Digitally controlled Dual Bean Grind'n Brew™ Brewer System. Brewer will maintain brew temperature to $\pm 1^{\circ}\text{F}$ throughout brew cycle. Brew temperature, brew volume (full and half batch), grind portions (right and left hopper, full and half batch), operator defined pre-infusion/pulse brewing, energy savings and Low Temp/No Brew are programmable from the front display.



GRINDMASTER™
CORPORATION

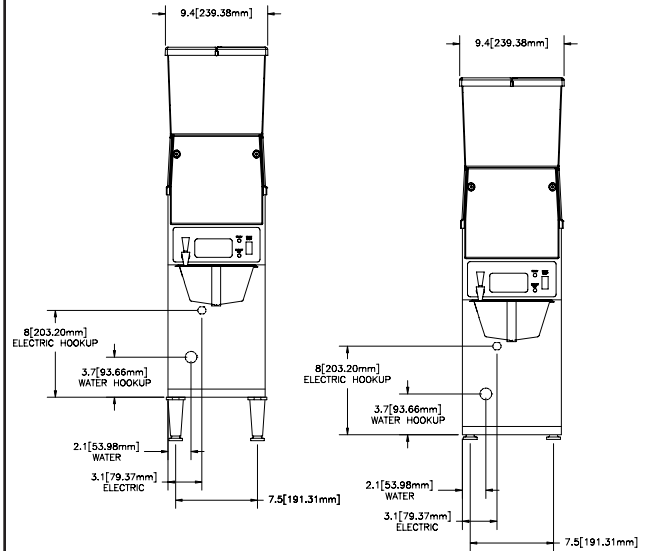


GRINDMASTER™
CORPORATION

Dual Bean Grindbrewers

Features:

- Dual Bean Grind'n Brew™ System - 3-Function capability: Grind only; Brew only; Grind'n Brew™, full and half brew capabilities. Digitally controlled with **PRECISION BREW™** Technology.
- Space-saving design eliminates the need for both grinder and brewer.
- Bean Usage Counter - Controller records volume of beans used from the hoppers.
- Grind Time - Grind time for half and full batch, right and left hopper can be set from front of brewer.
- Shutter mechanism keeps water vapor separated from grind head.
- Precise Brew Temperature - The brewer will hold the brew temperature to +/- 1°F during the complete brew cycle.
- Brew Volume - Can be set by 'teach' mode to eliminate trial-and-error set-up.
- Pulse brewing/pre-infusion - Allows the brew sequence to extract up to 20% more dissolved solids per batch of coffee. Programmable: number of pulses, pulse-on time and pulse-off time. Changing the pulse sequence does not affect the brew volume.
- Low Temp/No Brew - Allows the brew cycle to begin only when the water has reached the optimum brew temperature.
- Programming Lock-Out - The brewer settings can be "locked" to prevent tampering.
- Energy Savings/Coffee Old - The warmers, on 21H series models, can be programmed to shut off up to 240 minutes from the last brew cycle.



Front view - 20H

Front view - 21H

Specifications	Model 20H/20HE	Model 20HQ	Model 21H/21HE	Model 21HQ
Volts / Watts / Amps	20H: 120V / 1710W / 15A 20HE: 230V / 3214W / 14A	120/208-240V / 2674/3650W / 20A	21H: 120V / 1810W / 15A 21HE: 230V / 3306W / 14.4A	120/208V-240V / 2749/3660W / 20A
No. of Bean Hoppers	2	2	2	2
Hopper Size	6-1/2 lbs. (2.93 kg) each	6-1/2 lbs. (2.93 kg) each	6-1/2 lbs. (2.93 kg) each	6-1/2 lbs. (2.93 kg) each
Brew Capacity	74 oz. (2.2L)	74 oz. (2.2L)	64 oz. (1.9L)	64 oz. (1.9L)
Dimensions (H x W x D)	37-1/2" x 9-1/2" x 24-1/4" (94 cm x 24 cm x 61 cm)	37-1/2" x 9-1/2" x 24-1/4" (94 cm x 24 cm x 61 cm)	32-3/4" x 9-1/2" x 24-1/4" (82 cm x 24 cm x 61 cm)	32-3/4" x 9-1/2" x 24-1/4" (82 cm x 24 cm x 61 cm)
Ship Dimensions (H x W x D)	38-1/4" x 15-1/2" x 29-3/4" (96 cm x 39 cm x 74 cm)	38-1/4" x 15-1/2" x 29-3/4" (96 cm x 39 cm x 74 cm)	38-1/4" x 15-1/2" x 29-3/4" (96 cm x 39 cm x 74 cm)	38-1/4" x 15-1/2" x 29-3/4" (96 cm x 39 cm x 74 cm)
Weight	90 lbs. (40.5 kg)	90 lbs. (40.5 kg)	90 lbs. (40.5 kg)	90 lbs. (40.5 kg)
Ship Weight	95 lbs. (42.75 kg)	95 lbs. (42.75 kg)	95 lbs. (42.75 kg)	95 lbs. (42.75 kg)
Listings	UL, CUL, UL San., RoHS (E model only)	UL, CUL, UL San	UL, CUL, UL San., RoHS (E model only)	UL, CUL, UL San.

Specifications are subject to improvement or change without notice.



GRINDMASTER™
CORPORATION



RoHS

Grindmaster® Coffee Grinders and Brewers • PrecisionBrew™ Brewing Systems • Espresso® Espresso Machines
Crathco® Hot Beverage Dispensers • Crathco® Cold and Frozen Beverage Dispensers • AMW Coffee and Tea Systems
Tel (502) 425-4776 • Fax (502) 425-4664 • 1-800-695-4500 (USA & Canada only)

P.O. Box 35020 • Louisville, KY 40232 • USA